
()

*

(/ / : / / :)

()

(*Pinus taeda* L.)

(*Pinus nigra* Arn. ssp. *austriaca*)

(*Pinus brutia* Ten.)

(*Pinus radiata* D. Don.)

Cryptomeria japonica D.)

(*Pinus longifolia* Sarg.)

(*Pinus pinaster* Ait.)

(*Cedrus deodara* D. Don.)

(Don.

()

()

:

)

(

.(Rahmani et al., 2001)

Critchfield & Elbert,)

/

.(1966

.(Langdon, 1979)

Gorji)

.(Bahri, 2010

.(Dastmalchi, 1995)

()

.()

.()

()

:(Mohammadnezhad Kiasari et al., 2008)

×

= = =
= = =
= = =

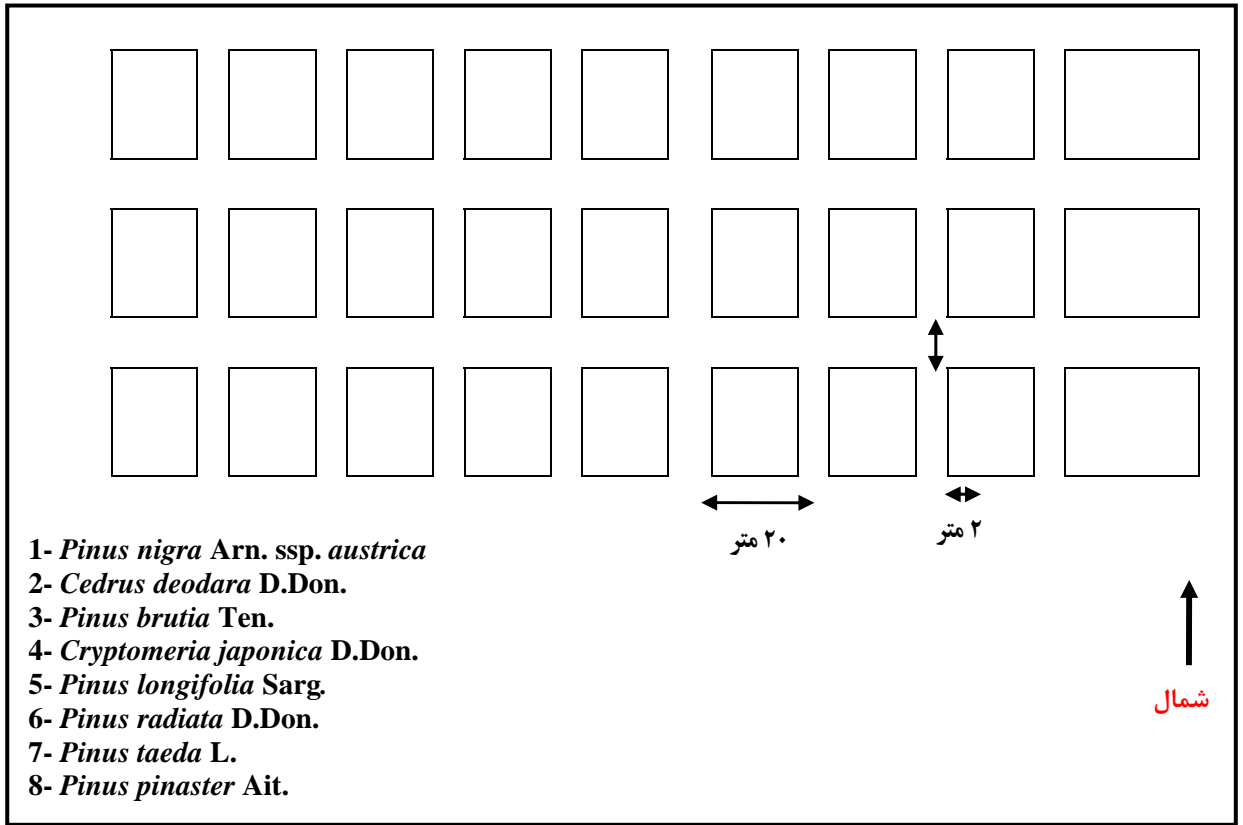
)
(

(z)

.(Farsi, 2009)

Mstatc Spss

(+)	<i>Pinus nigra</i> Arn. ssp. <i>austrica</i>
(+)	<i>Cedrus deodara</i> D.Don.
(+)	<i>Pinus brutia</i> Ten.
(+)	<i>Cryptomeria japonica</i> D.Don.
(+)	<i>Pinus longifolia</i> Sarg.
(+)	<i>Pinus radiata</i> D.Don.
(+)	<i>Pinus taeda</i> L.
(+)	<i>Pinus pinaster</i> Ait.



(

/

/

/

/

()

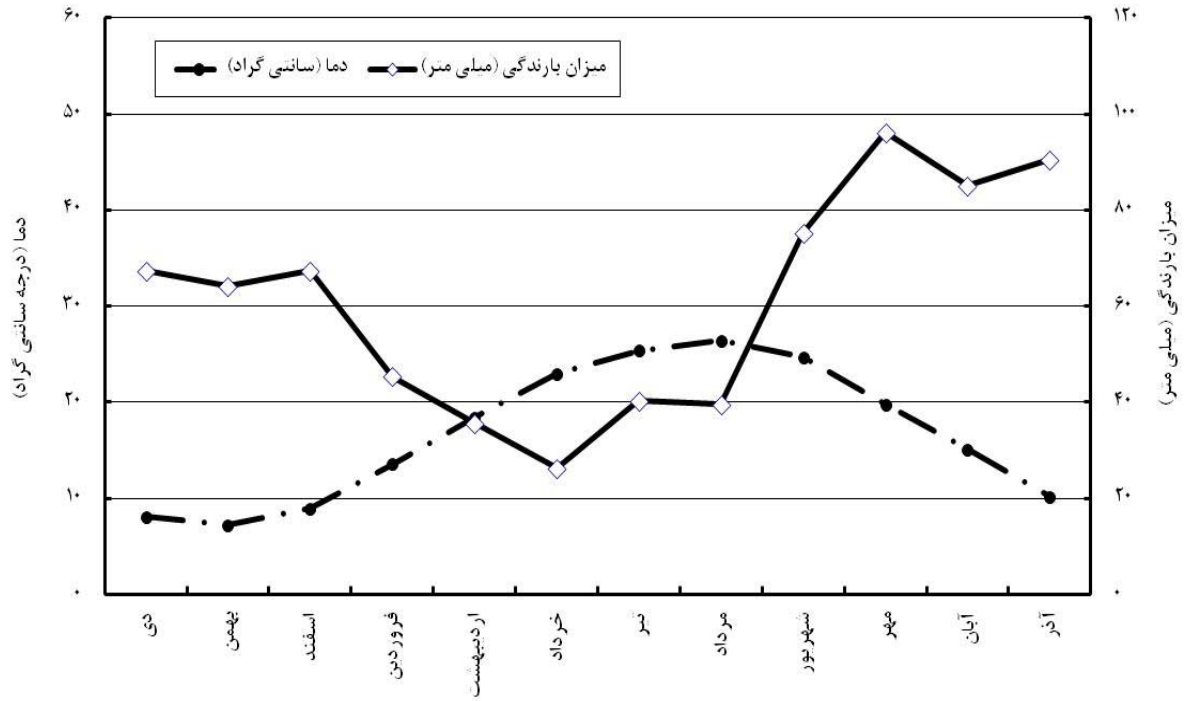
)

/

$$Q_2 = \dots$$

()

/



()

()

()

()

()

(Mottling)

()

...

%

(z)

/

/

/

X df =

X

%

P.P.m.	P.P.m.	%	Me/100g	O.C%	T.N.V%	pH	(Cm)
		/	/		/	/	A ₁
		/	/	/	/	/	B ₂
		/	/	/		/	B _{t1}
		/	/	/		/	B _{t2}
	/	/	/	/	/	/	C

()	()	()	
/ a	/ a		Bc * <i>Pinus brutia</i>
/ a	/ a		a <i>Pinus taeda</i>
/ a	/ a	/	bc <i>Pinus radiata</i>
/ b	/ a	/	d <i>Pinus longifolia</i>
/ c	/ b		ab <i>Pinus nigra var. austriaca</i>
/ a	/ a	/	c <i>Pinus pinaster</i>
/ b	/ b	/	bc <i>Cryptomeria japonica</i>
/ a	/ a	/	cd <i>Cedrus deodara</i>

*

c	/	bc	/	b	/	a*	<i>Pinus brutia</i>
c		bc	/	b	/	a	<i>Pinus taeda</i>
/	c	/	bc	/	b	/	a
	c		bc		b		a
/	b	/	a	/	b	/	b
/	c	/	c	/	b	/	a
	c	/	bc	/	b	/	a
	c		c	/	bc	/	a

*

(Little, 1971)

(Mohammadnezhad Kiasari et al., 2007)

(Fowells, 1965)

(Gelderen & Smith, 1992)

(Forests and Rangelands Organisation, 1996)

(Foil & Ralston, 1967)

Gholizadeh,)

(2009

()

Mostafanezhad and)

(Sadati, 2007

()

(/)

()

(/)
()

(Forests and Rangelands Organisation, 1996)

()
) ()
() ()
) ()
()

Khorankeh et al.,)

(2005

Forests and Rangelands Organisation,)

(1996

Dastmalchi,

(1995)

Russell &)

(Honkala, 1990

(Isik & Kara, 1997)

()
(/) ()
(/) ()



)

()

(

()

Rhyacionia)

(buliana

Sphearopsis

sapinea

()

References

- Critchfield, W.B. and L.J. Elbert, 1966. Geographic distribution of the pines of the world, U. S. Department of agriculture, Nisellaneous publication. Washington DC, 97 pp.
- Dastmalchi, M. 1995. Brutsia, Research Institute of Forests and Ranglands, Tehran, 139 pp.
- Farsi, M. 2009. Experimental designs in agricultural sciences. Jihad University of Mashad, 448 pp.
- Foil, R. and Ralston, C. W. 1967. The establishment and growth of loblolly pine seedlings on compacted soils. Soil Science Society of America Proceedings, 31(4). 5 pp.
- Forests and Ranglands Organisation, 1996. Investigation of softwoods reforestations in the north of country. Office of Parks and Plantation, Mazandaran, 98 pp.
- Fowells, H.A. 1965. Silvics of forest trees of the united states. U.S. Department of Agriculture, Agriculture Hand Book 271. Washington, DC. 262 pp.
- Gelderen, D.M. and Smith, J. 1992. Conifers. Timber Press, INC, 356 pp.
- Gholizadeh, M. N. 2009. Elimination trial with needle leaves species Caspian forest of Iran (Nowshahr region). Agriculture & Natural Resources Research Center of Mazandaran Province, Final report of research design, No. 3004, 42 pp.
- Gorji Bahri, Y. 2010. Study and silvicultural evaluation of previous conifer plantation areas in the West of Mazandaran. Agriculture & Natural Resources Research Center of Mazandaran Province, Final report of research design, No. 4917, 83 pp.
- Isik, K. and Kara, N. 1997. Altitudinal variation in *Pinus brutia* Ten. And its implication in genetic conservation and seed transfers in Southern Turkey. *Silvae Genetica*. No. 46 (3). 8 pp.
- Khorankeh, S., Sardabi, H., Mosazadeh, S. A., Barimani, H. and Dehbandi, A. R. 2006. Pilot trial of three pine species at Caspian eastern littoral of Iran. *Iranian Journal of Forest and Poplar Research*. Vol. 14 (1). 7 pp.
- Langdon, O.G. 1979. Natural regeneraton of Loblolly pine. In: Proceeding of the natural silviculture workshop, Theme: The Shelterwood regeneration method, Charleston, Sc. Washington, D.C.: U.S. Department of Agriculture, forest service, Division of timber management: 101-116. USA.
- Little, E. L. 1971. Atlas of united states trees. Vol.1. Conifers and important hardwoods. U.S. Department of Agriculture, Miscellaneous Publication 1146. Washington, DC. 219 pp.
- Mohammadnezhad Kiasari, Sh., Sardabi, H., Mousavi, S.A., Borhani, A., and Ghasemi, S. 2007. Seedling production of Loblolly pine (*Pinus taeda* L.) in eastern Mazandaran (Passand research station-northern Iran). *Iranian Journal of Forest and Poplar Research*. Vol. 15 (1). 11 pp.
- Mohammadnezhad Kiasari, Sh., Sardabi H., Mosavi Garmestani S. A., Borhani, A., Karandeh, M., Bozorgnezhad R. and Ghasemi, S. 2008. Effect of sowing date om growth and survival of Brutain Pine (*Pinus brutia*) and Mediterranean Cypress (*Cupressus sempervirens* var. *horizontalis*) in eastern Mazandaran. *Iranian Journal of Forest and Poplar Research*. Vol. 16 (2). 11 pp.
- Mostafanezhad, S. R. and Sadati, S. E. 2007. Adaptation of Eastern Red Cedar (*Juniperus virginiana*) in Chamestan – Mazandaran (North of Iran). *Iranian Journal of Forest and Poplar Research*, Vol. 15(1). 10 pp.
- Rahmani, R., Mohammadnezhad Kiasari, S. and Mosavi, S. A. 2001. Structure of a 30-years old plantation of *Pinus nigra* ssp. *austriaca* in relation to natural establishment of native broadleaced trees. The 1 st Conference of plantation with fast growing forest trees in North of Iran. Mazandaran, Kelarabad: 24-26. Iran.
- Russell, M. B. and Honkala, B. H. 1990. Silvics of north America. Forest Service United States, Department of Agriculture, Washington, DC, Volume 1, 877 pp.

Adaptation of the Most Important Conifers of *Neka* Forests (Kohsarkandeh)

S. Mohammadnezhad Kiasari^{*1}, S. A. Mousavi², S. Amini², H. Barimani Varandi³, F. Najafi⁴
and M. Farsdi⁵

¹ Assistance Prof., Agriculture & Natural Resources Research Center of Mazandaran, I.R. Iran

² Senior Forest Expert, Sari General Office of Natural Resources, Sari, I.R.Iran

³ Member of Scientific Board, Agriculture & Natural Resources Research Center of Mazandaran,
I.R. Iran

⁴ Senior Plant Science Expert, Agriculture & Natural Resources Research Center of Mazandaran,
I.R. Iran

⁵ Assistance Prof., Department of wood and paper science, Sari Branch, Islamic Azad University,
I.R. Iran

(Received: 03 January 2011, Accepted: 10 April 2012)

Abstract

The aim of this study was to introduce the most successful exotic coniferous species for forest plantation projects. The trial conducted in 1993 at low altitude of *Neka* region in *Mazandaran* Province of I. R. Iran (North Forests), under Completely Randomized Block Design (CRBD) with three replication and eight treatments. The treatments consisted of six Pine species (*P. taeda*, *P. radiata*, *P. brutia*, *P. nigra* var. *austriaca*, *P. pinaster* and *P. longifolia*), *Cryptomeria japonica* and *Cedrus deodara*. The species growth characteristics including survival, height, diameter at breast height and also qualitative characteristics were assessed and measured after 18 years, Soil physical and chemical properties were determined and climate characteristics were identified. The results of statistical analysis showed that there were statistically significant differences between qualitative and quantitative parameters of species. Analysis of characteristics showed that Loblolly pine (*P.taeda* L.) and Brutian pine (*P.brutia* Ten.) were the most promising species; in the second stage Hymalaya Cedar (*Cedrus deodara* D.Don.) and Japanes cedar (*Cryptomeria japonica* D.Don.) were promising species, respectively.

Key words: Elimination trial, Needle-leaved, Caspian forests, Survival, Height, Diameter